

Industrial Damper • 10" Deep • Airfoil Blades • Channel Frame • Galvanized Steel • 800°F Max Temperature

For use up to 15 in. w.g. static pressure

STANDARD CONSTRUCTION

FRAME: 2" x 10" x 2", 10 GA. hot rolled steel formed channel frame.

BLADE: 10 GA. galvanized steel, airfoil design, to a maximum 60" length.

SHAFT: 1" dia. plated cold-finished steel, corrosion resistant, for up to 48" in length. 1" dia. for up to 60" length.

BEARINGS: Stainless steel flanged sleeve, bolted to the frame.

LINKAGE: ½" dia. inter-connecting rod with trunnion pivot fasteners, located in jamb.

OPERATOR: Manual hand quadrant or lever arm for motor actuator. Specify type when ordering.

FINISH: Mill.

TEMP. LIMIT: 800°F

Consult the factory for temperature limits over 800°F.

OPTIONS

Stuffing boxes and replaceable packing

Jamb Seals - Stainless steel

Blade Edge Seals - Stainless steel

Flanges other than the standard 2" wide

Finishes - Acrylic, baked enamel, etc.

Perimeter holes: one flange or two flanges

Other types of bearings

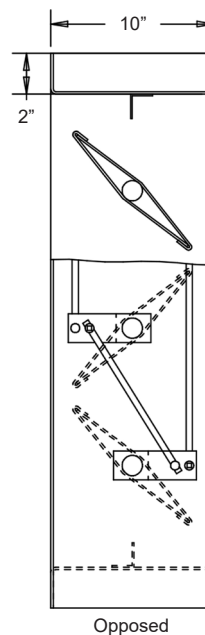
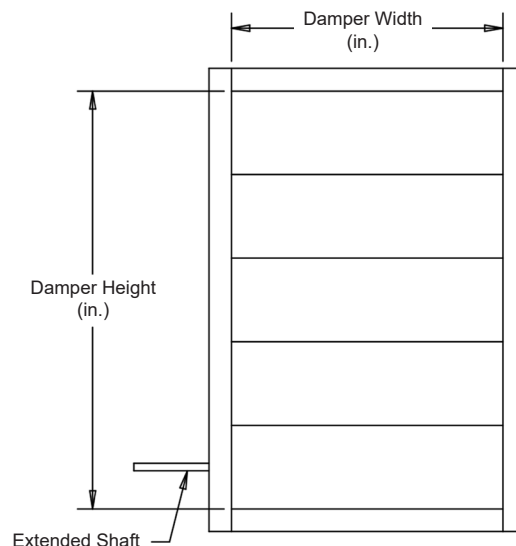
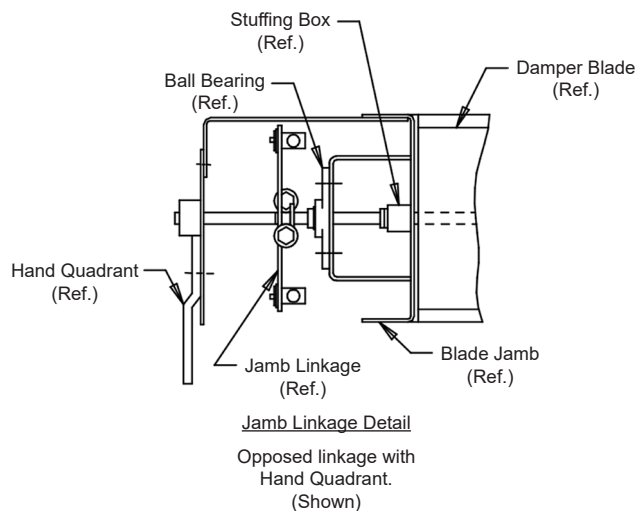
Materials - Corten available

NOTES

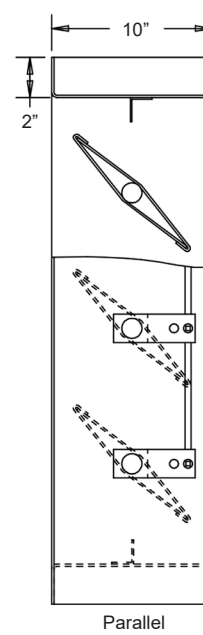
1. ¼" nominal deduction will be made to the opening size given.
2. Construction may be with other materials when required to meet special conditions, such as: temperature, pressure, velocity, system environment, or other specifications.
3. This damper is not available in stainless steel.
4. Approximate shipping weight is 18 lbs./sq.ft.

DAMPER SIZES

Min. Size	Max. Size
6"W x 6"H (Single Blade)	60"W x 96"H
6"W x 12"H (Opposed)	

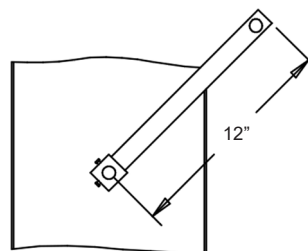


Opposed



Parallel

Not to scale.



Lever for motor operation.

For handwritten orders, use the schedule block on page 2.

In the interest of product development, Louvers & Dampers reserves the right to make changes without notice.

www.louvers-dampers.com

450 Riverside Drive • Wyalusing PA, 18853 • Phone 570-746-1888 • Fax 570-746-9286

